

Standard Spectrum Resource Format (SSRF) v3.1.0 (MC4EB Pub 8) Data Diagrams

<u>Dataset</u>	<u>Page</u>	<u>Dataset</u>	<u>Page</u>	<u>Dataset</u>	<u>Page</u>
Contents	1	Force Element	12	RF System	23
Administrative	2	Interference Report	13	Role	24
Allotment	3	JRFL	14	Satellite	25
Antenna	4	Link	15	SSReply	26
Antenna Mode	5	Loadset (US)	16	SSRequest	27
Assignment & Note (US)	6	Location	17	Station	28
Common	7	Message	18	TOA & Channel Plan	29
Configuration	8	Organisation	19	Transmitter	30
Contact	9	Radiation Plan (US)	20	Transmitter Mode	31
External Reference	10	Receiver	21	Standard Attributes	32
Force Deployment	11	Receiver Mode	22	User Guide to Drawings	33

Color Key: Core Namespace, US Namespace, Divergence

Inherited Dataset

Referenced Dataset

Cardinality [x..y]

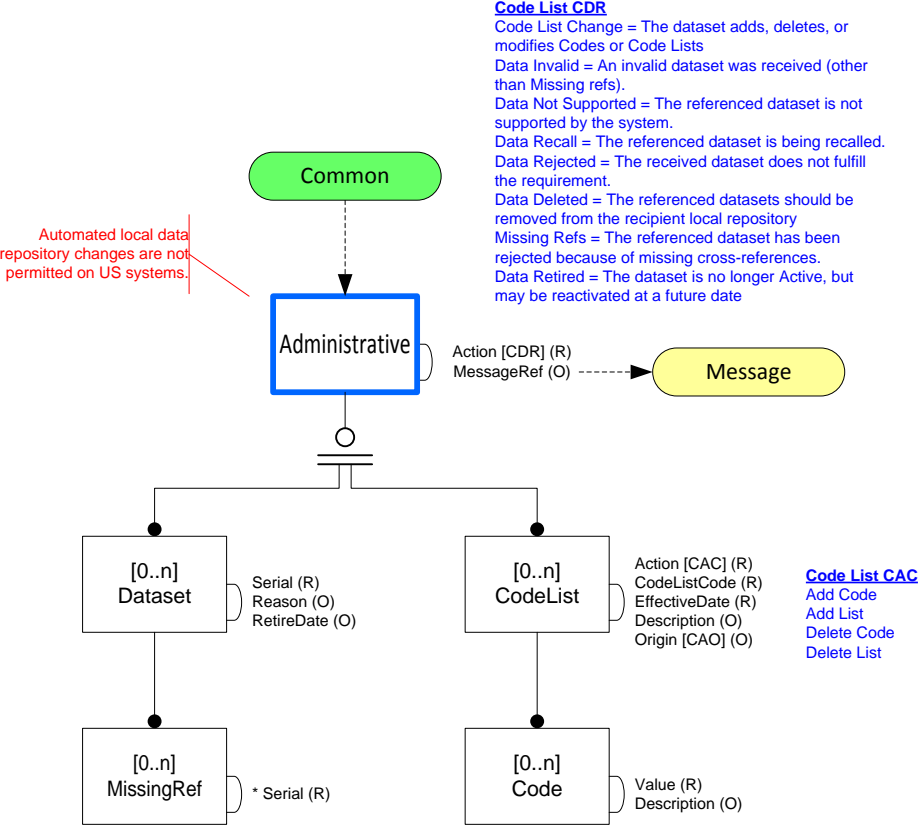
[Go to Contents](#)

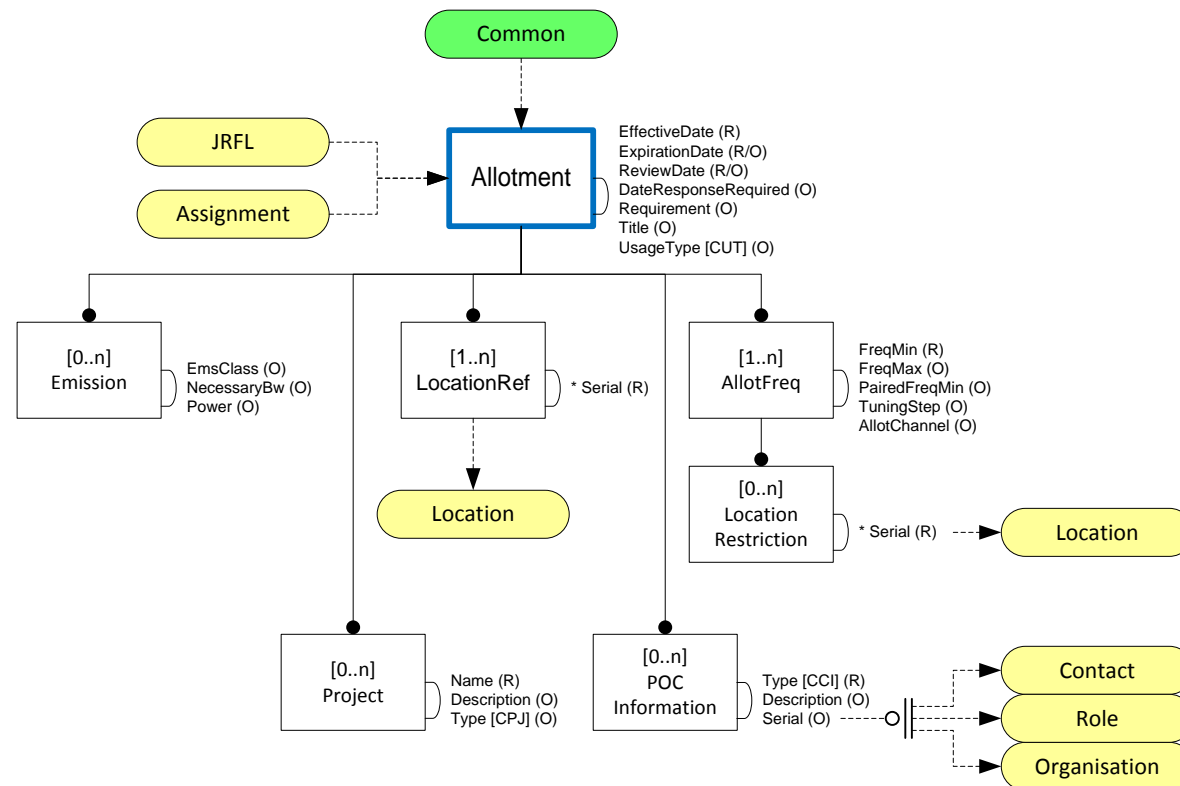
SSRF

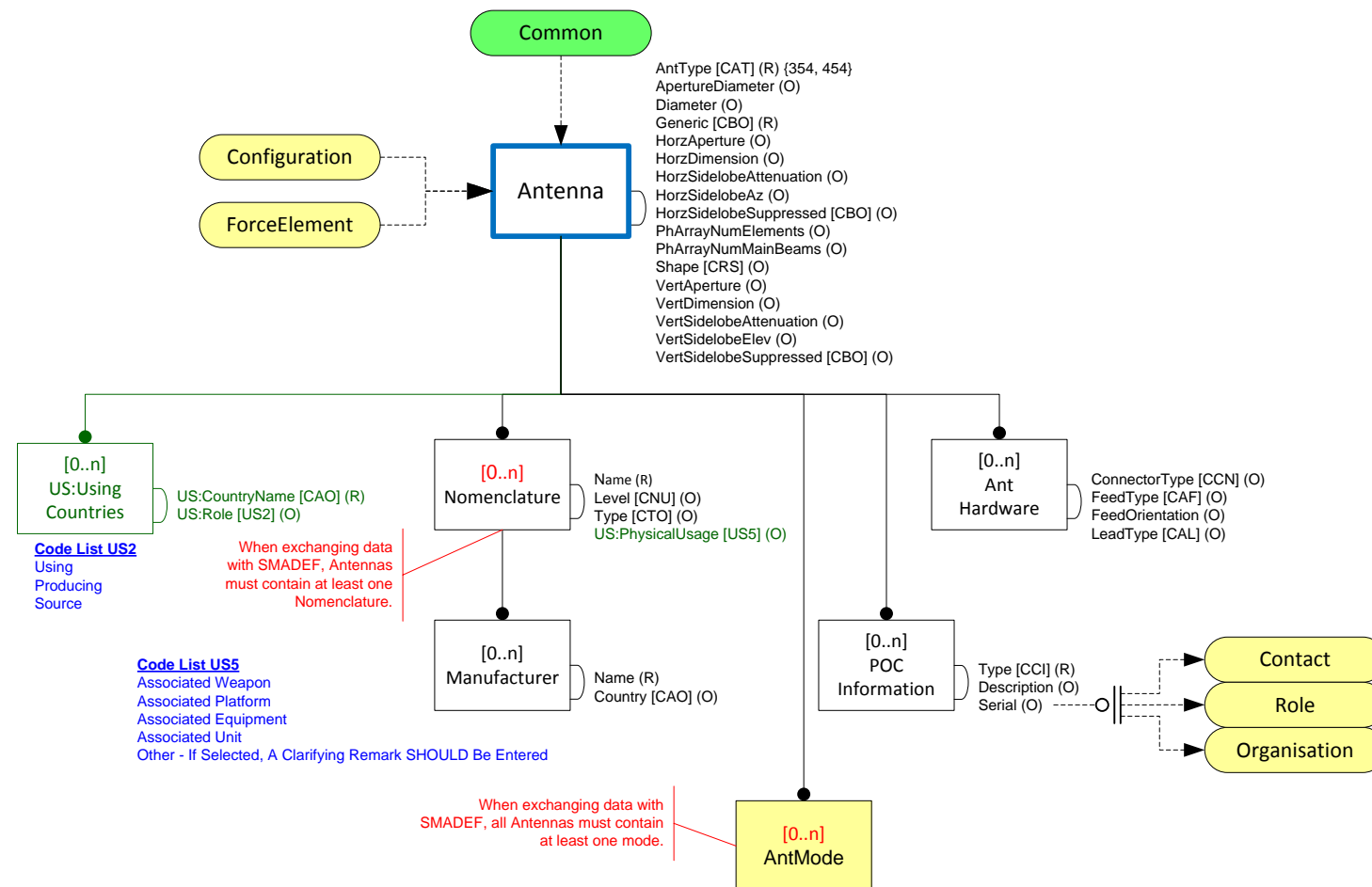
Contents

v3.1.0

1

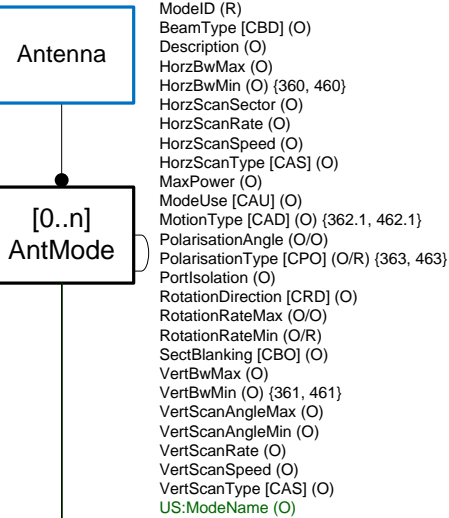






When exchanging data with SMADEF, all Antennas must contain at least one mode.

Configuration



Code List US8

Primary

Secondary

Other - if selected, an explanatory Remark SHOULD be entered

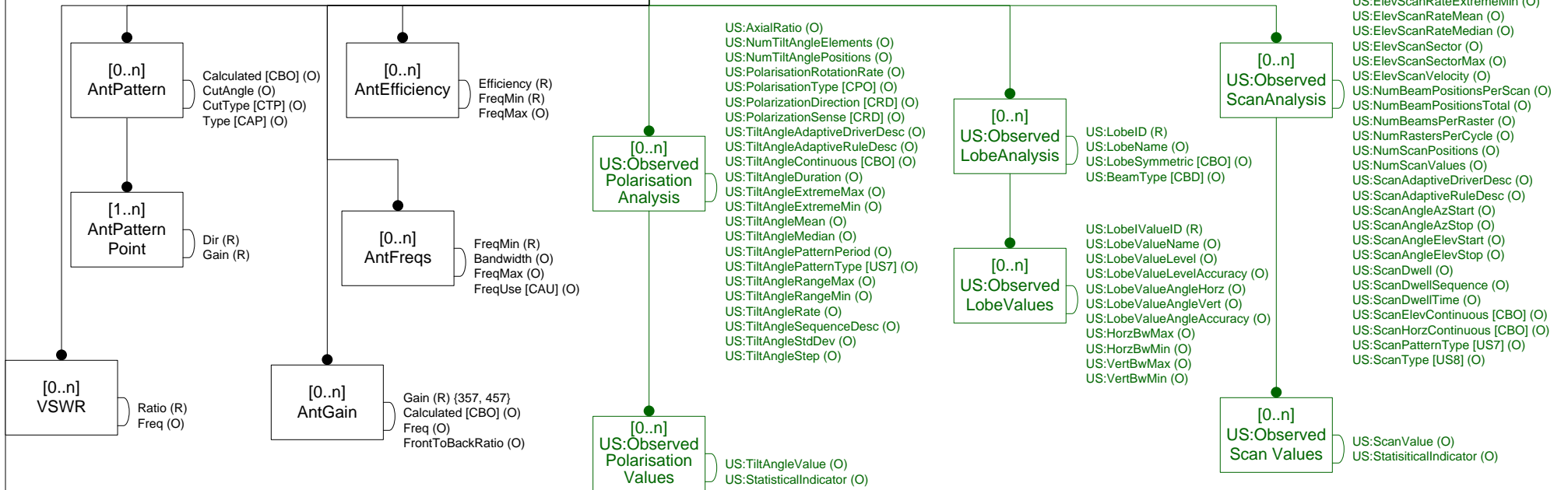
Code List US7

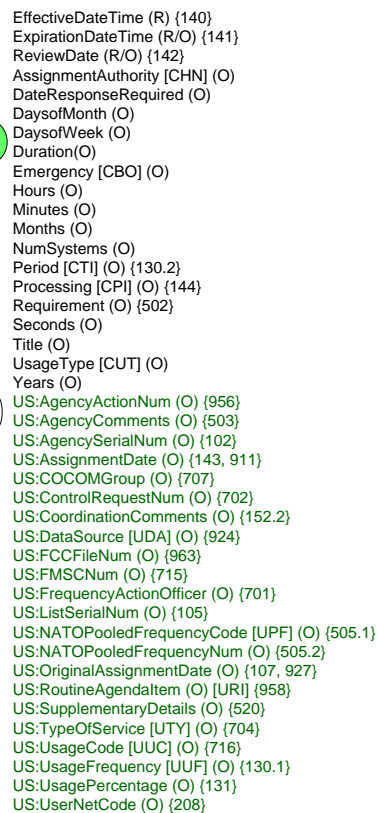
Unmodulated - indicated by a constant ERP.

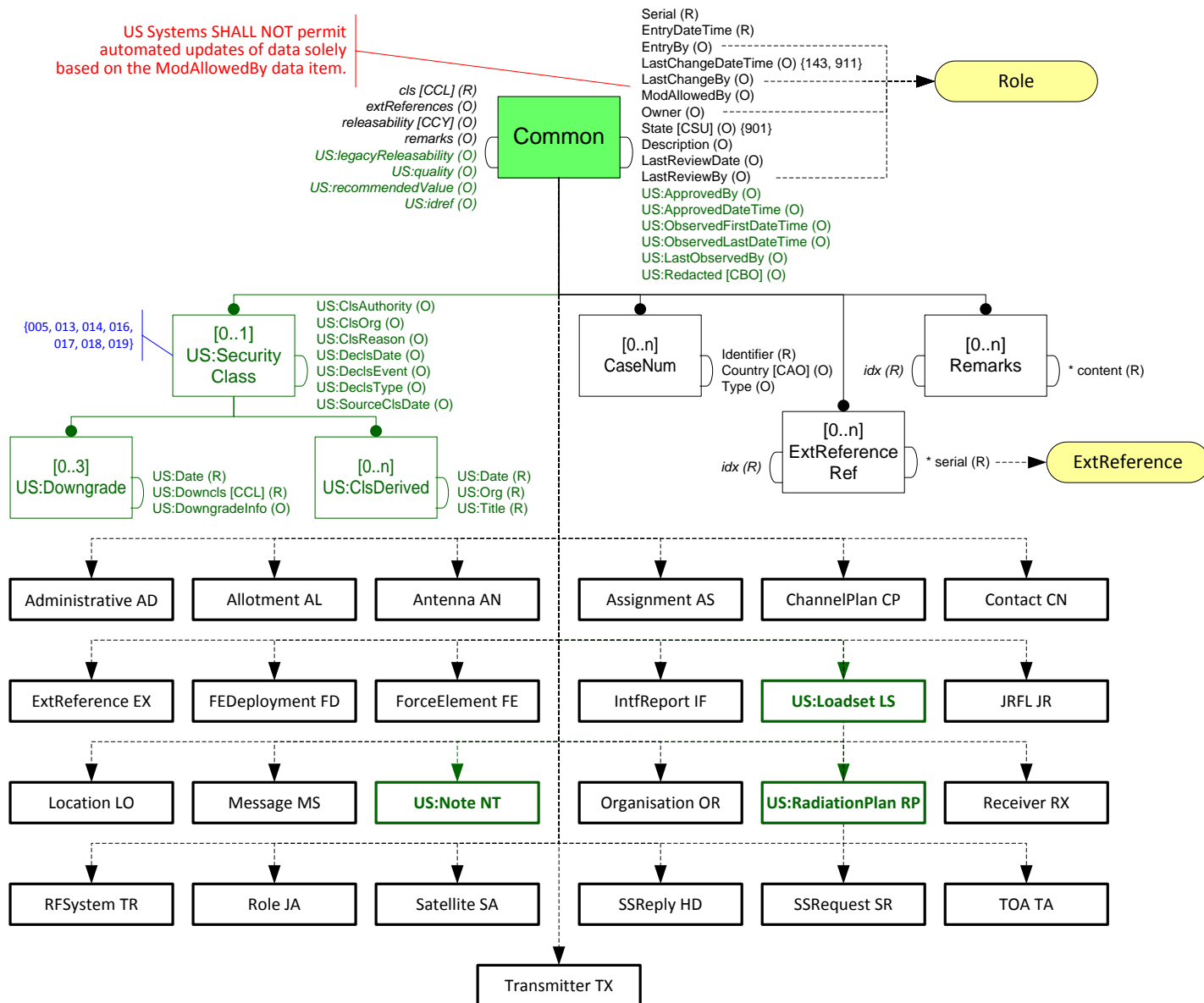
Patterned - variations repeat significantly to create a recognizable pattern.

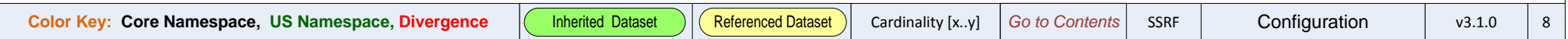
Non-patterned - variations do not repeat significantly to create a recognizable pattern.

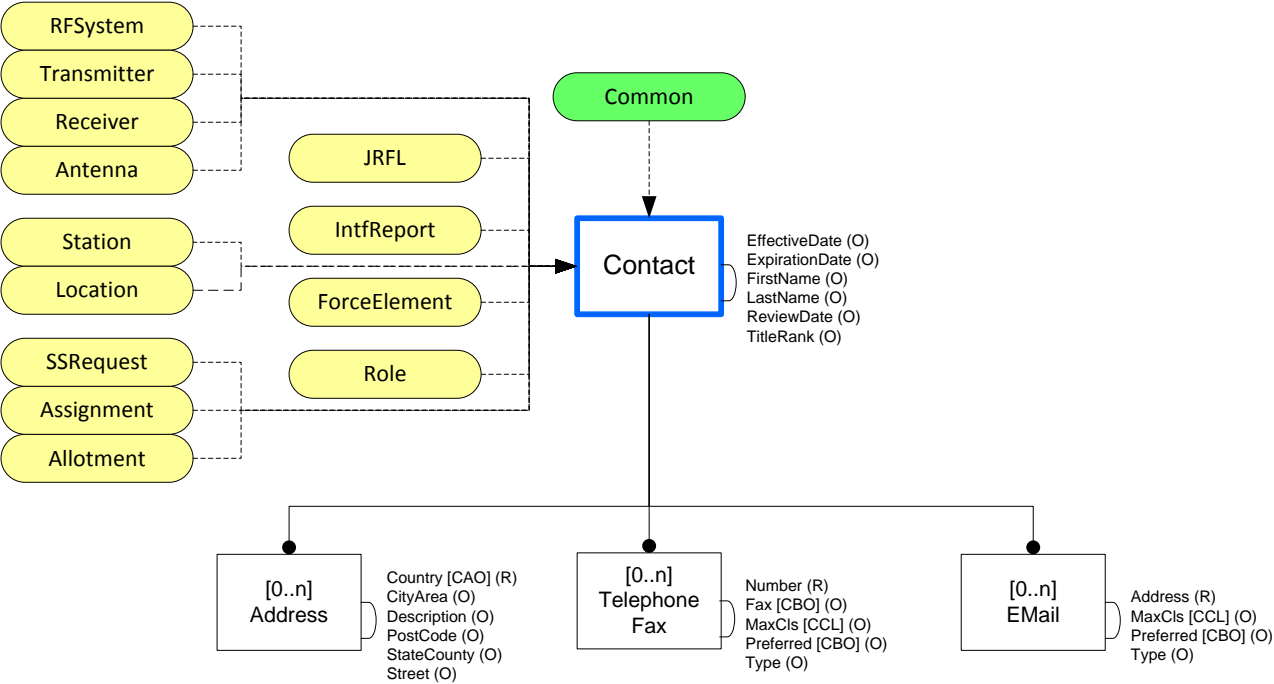
Adaptive - variations are driven by an environmental condition (e.g., target range, target velocity, etc.)

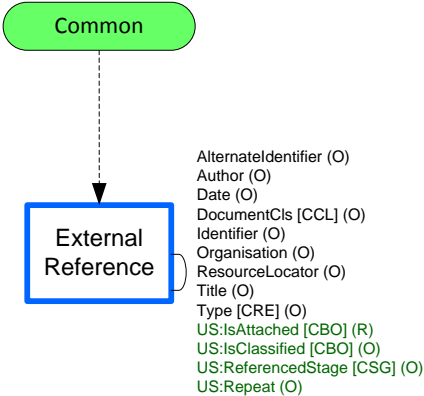


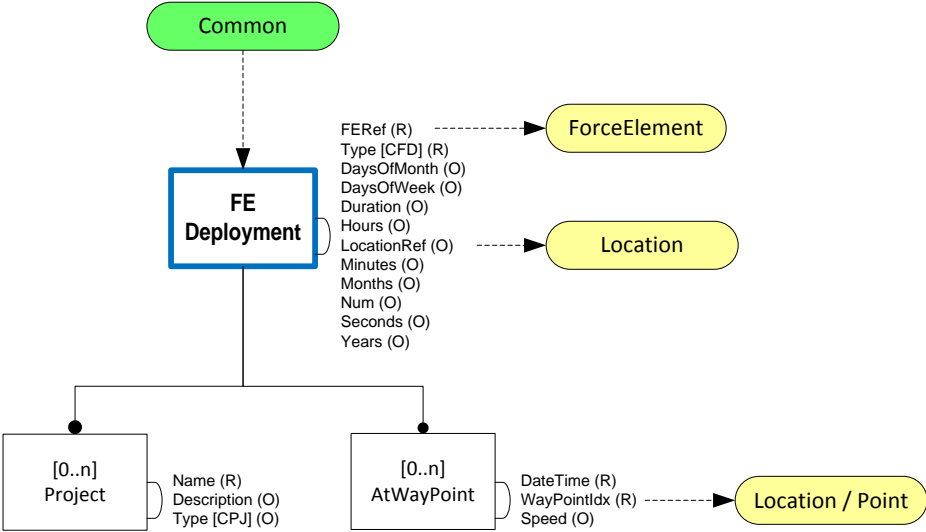


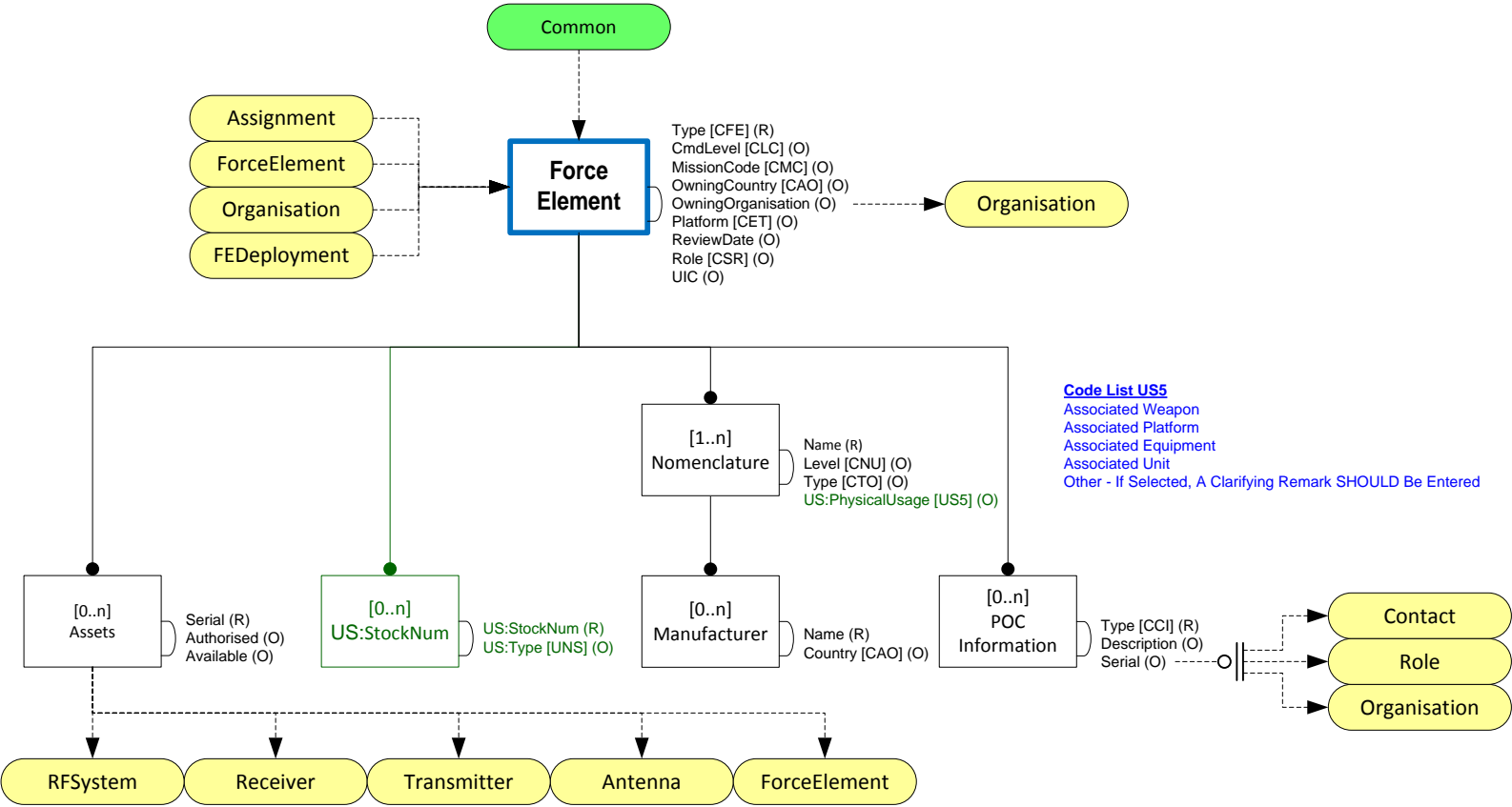


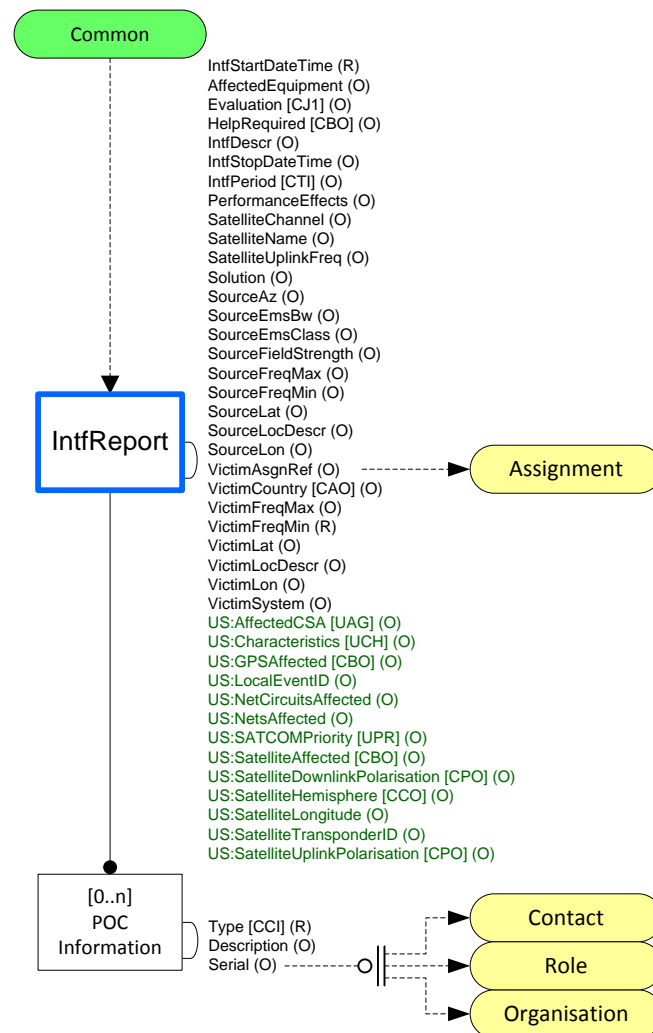


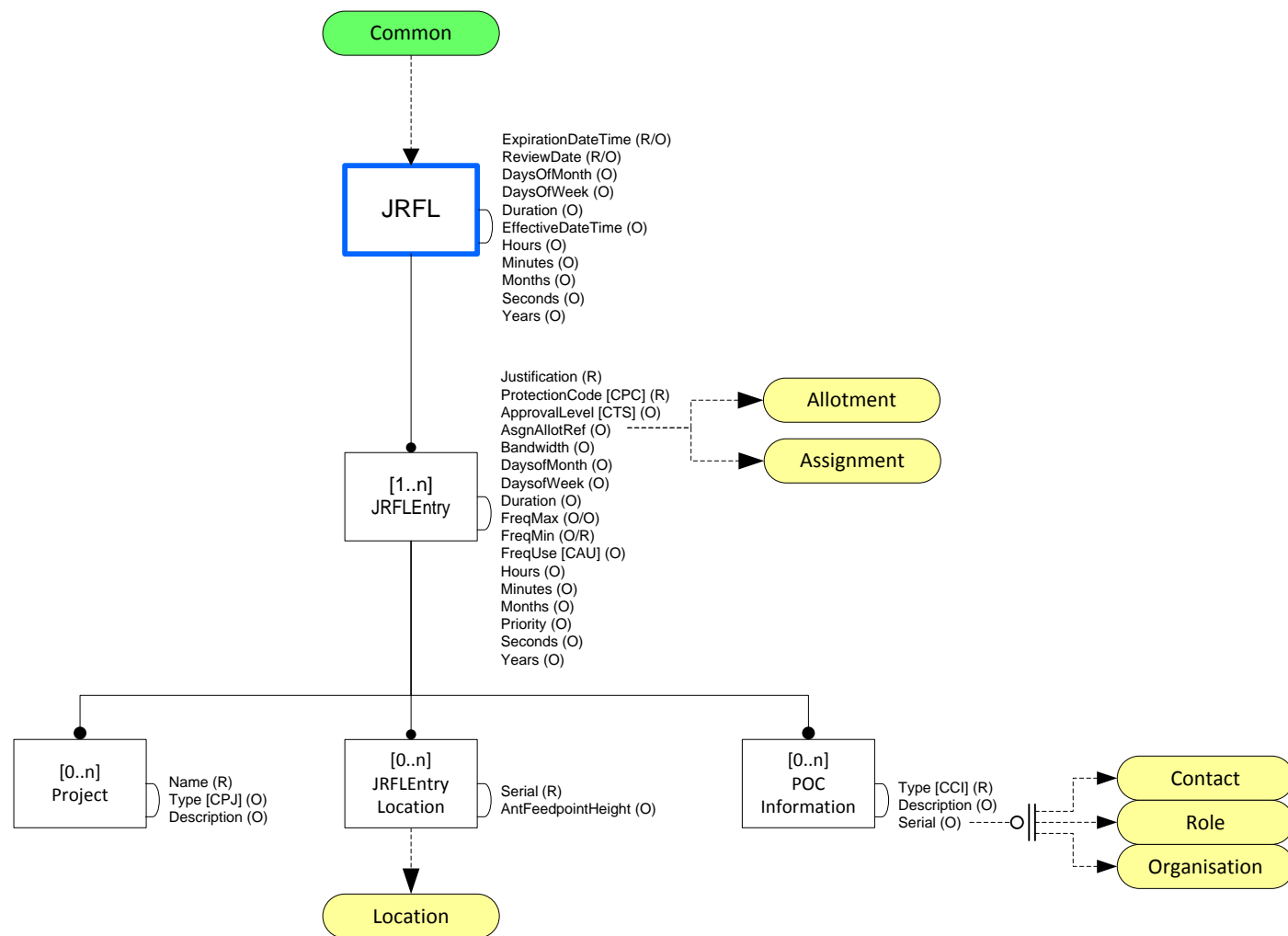


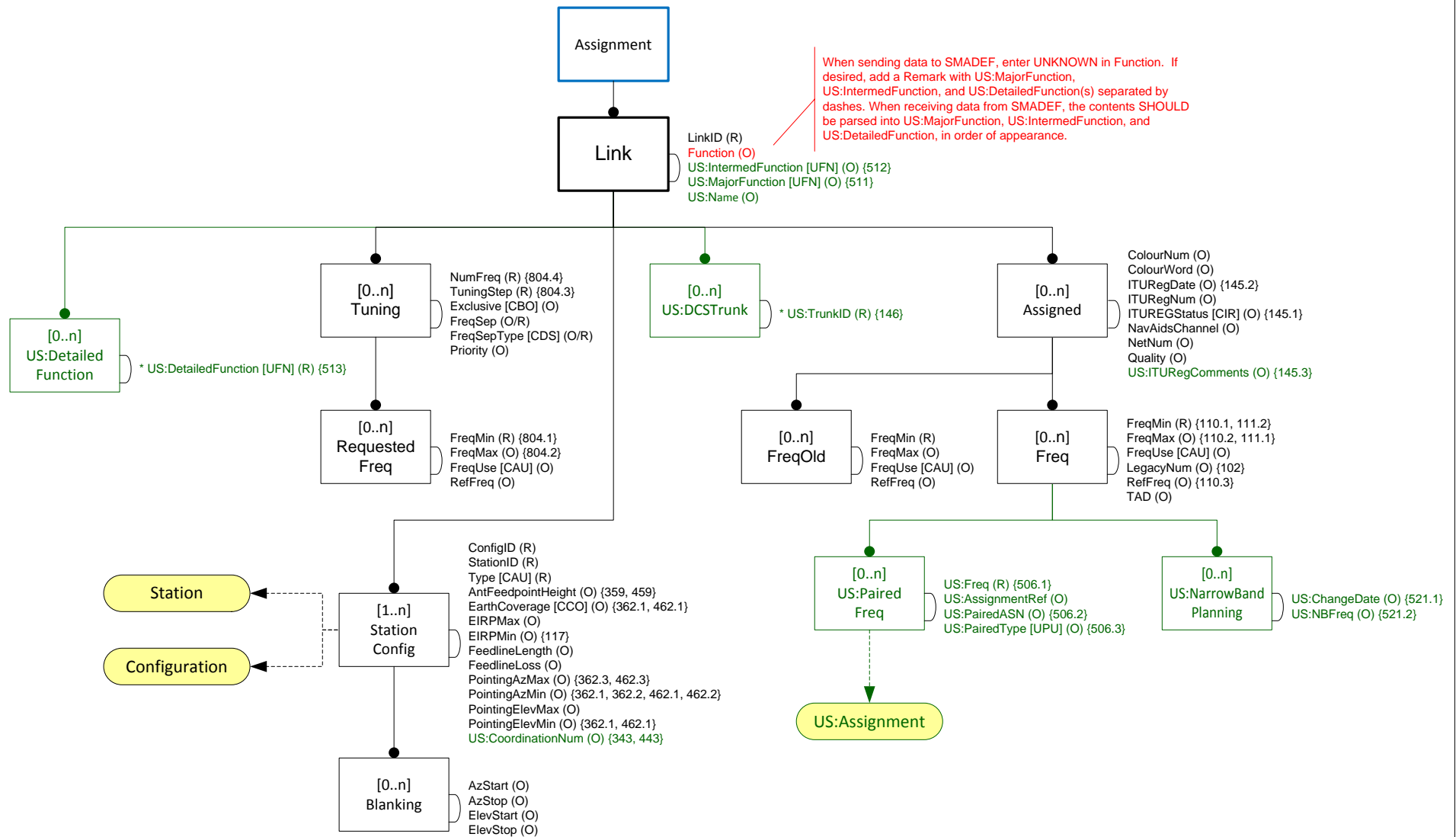


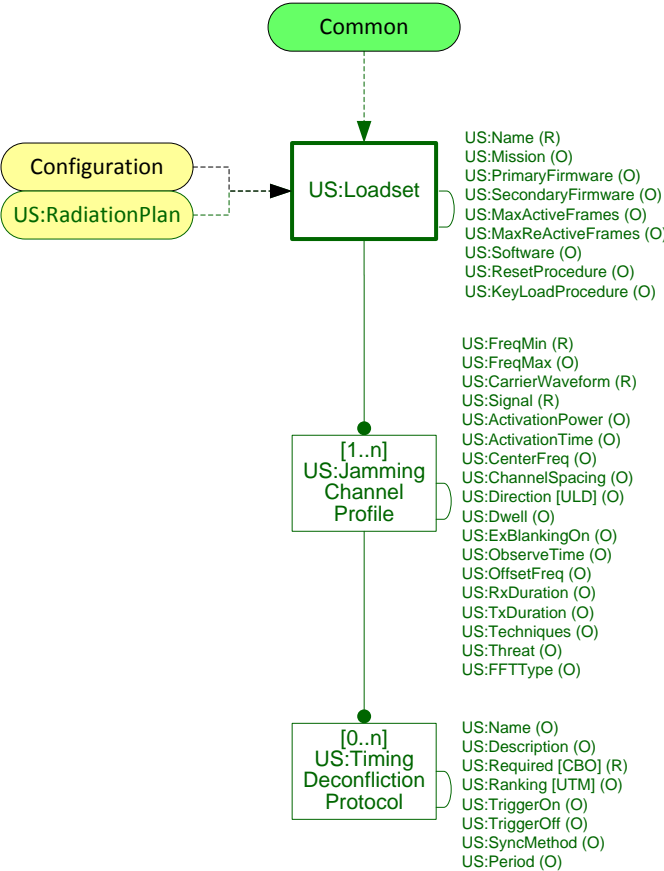


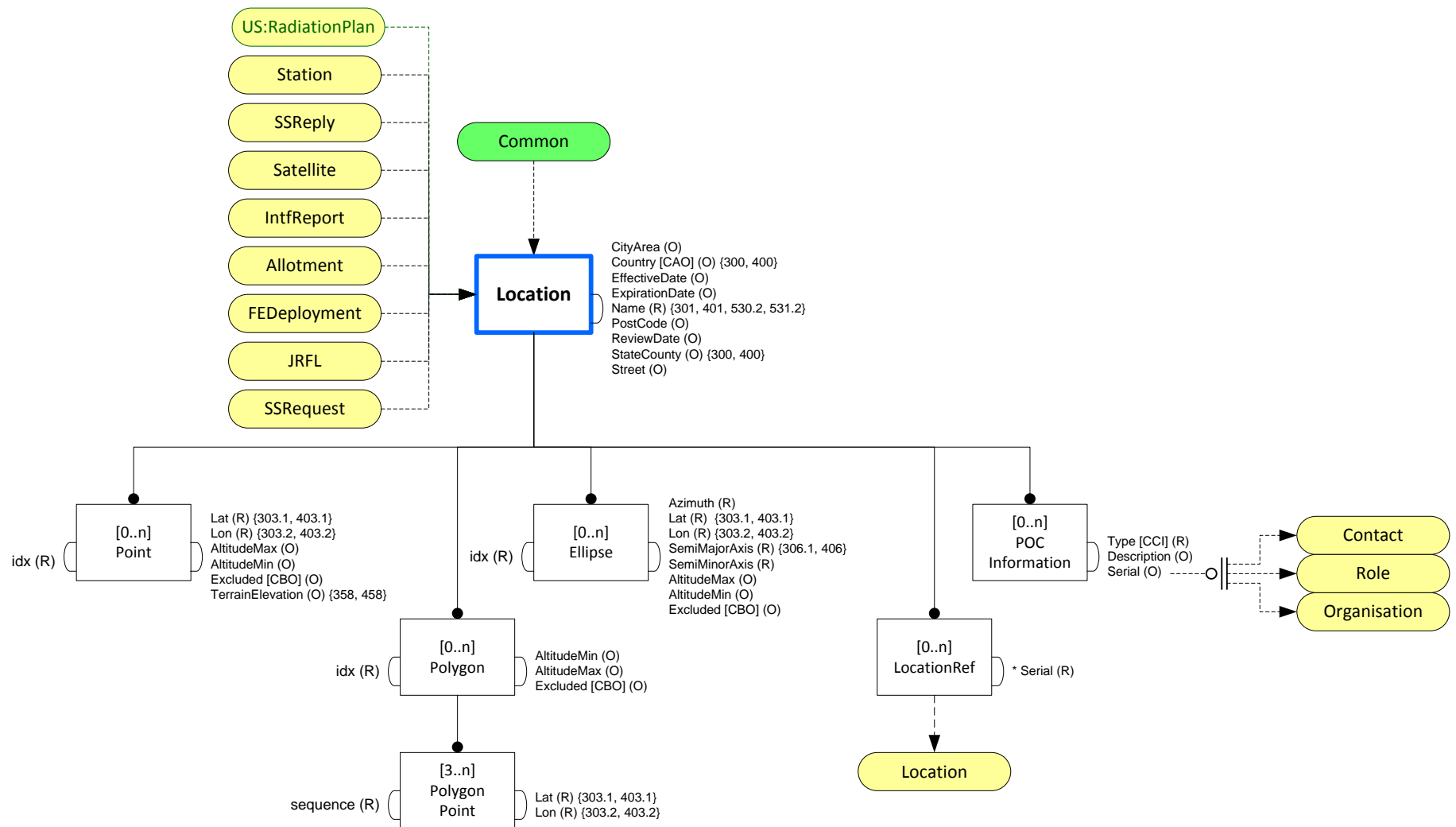


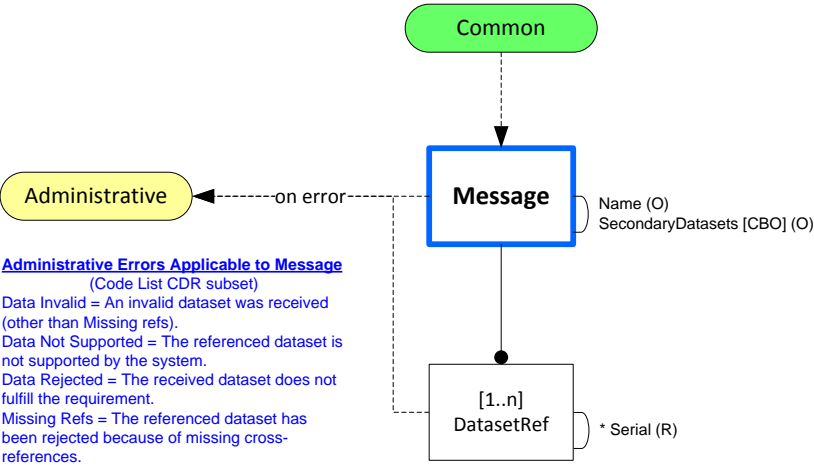




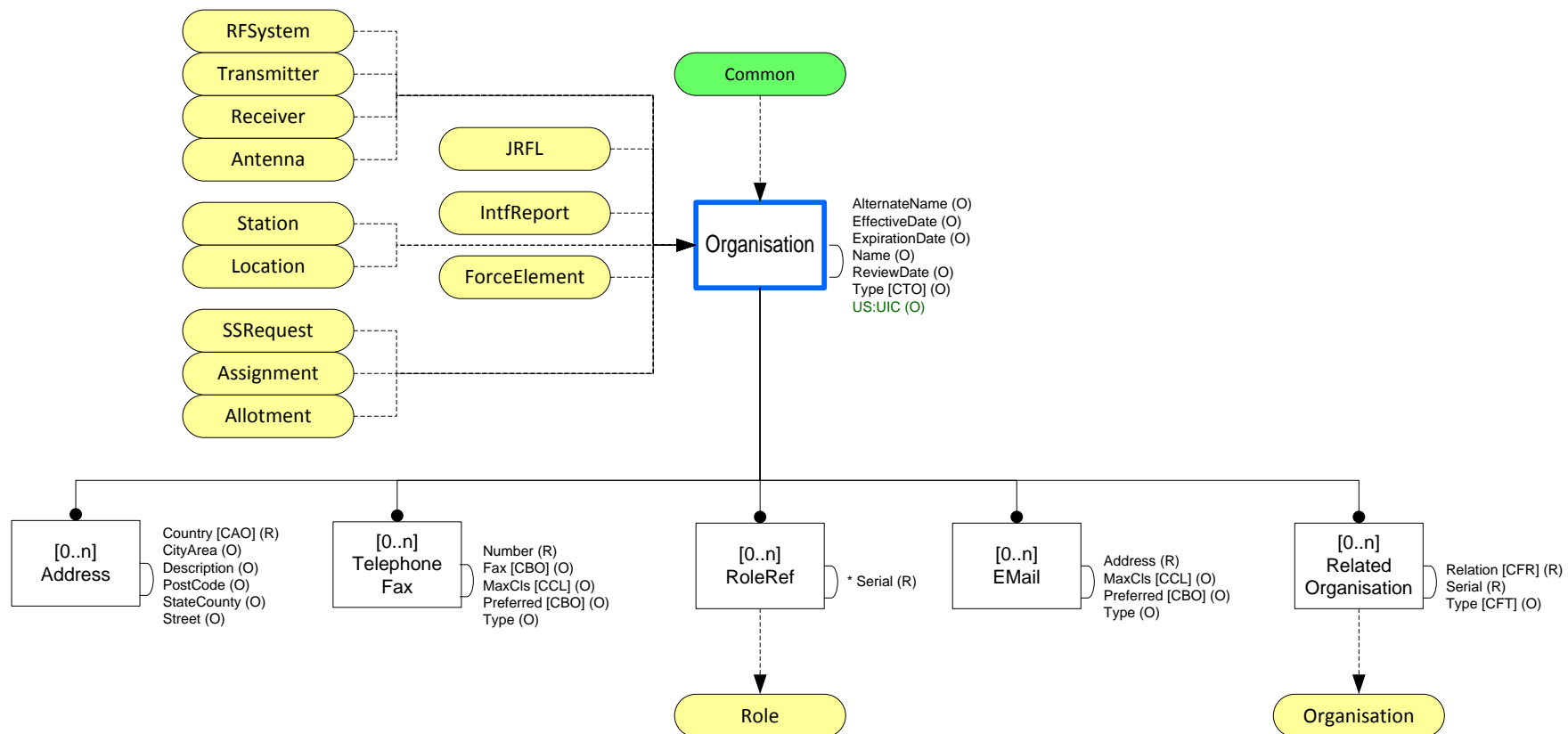


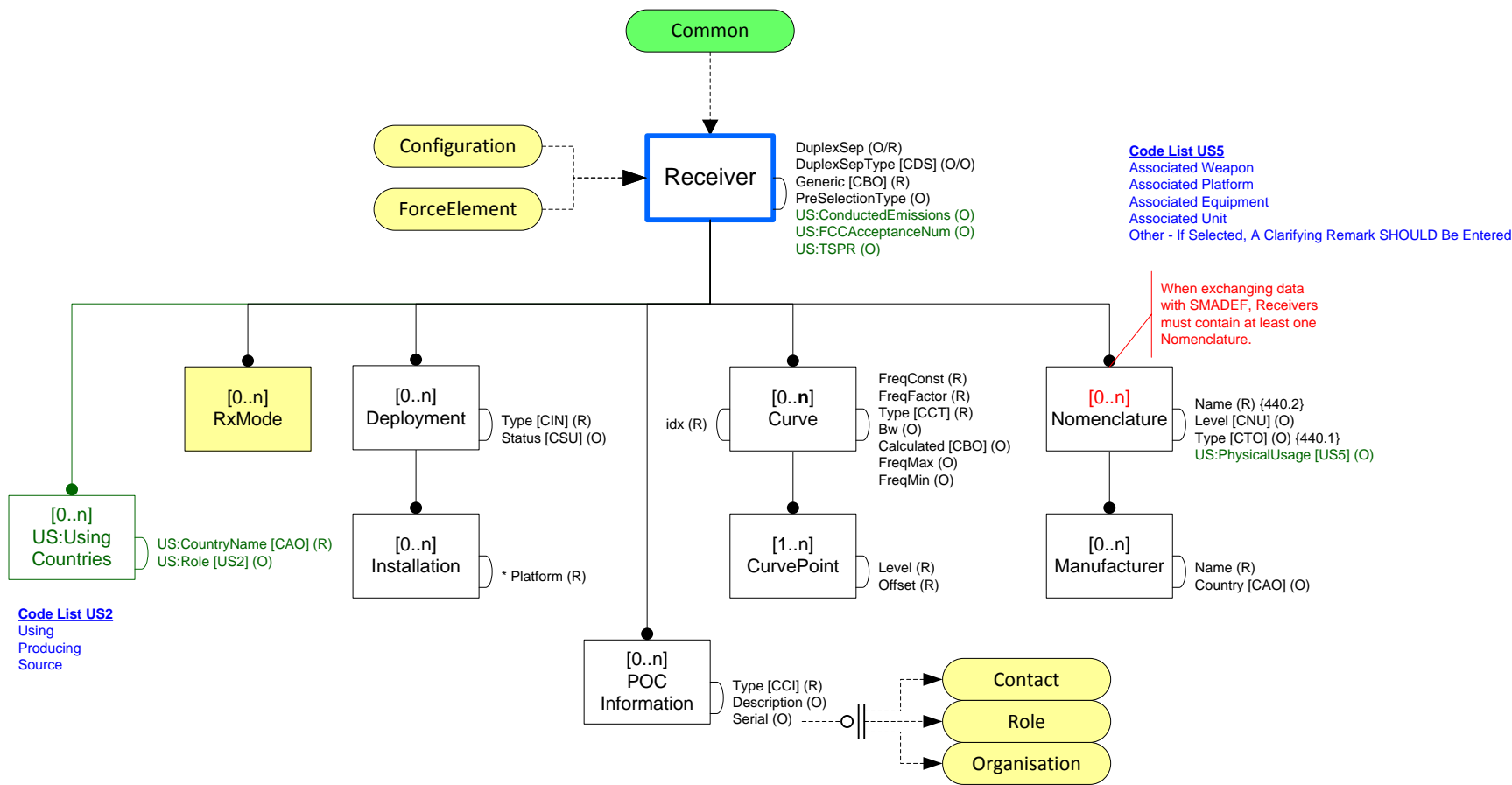


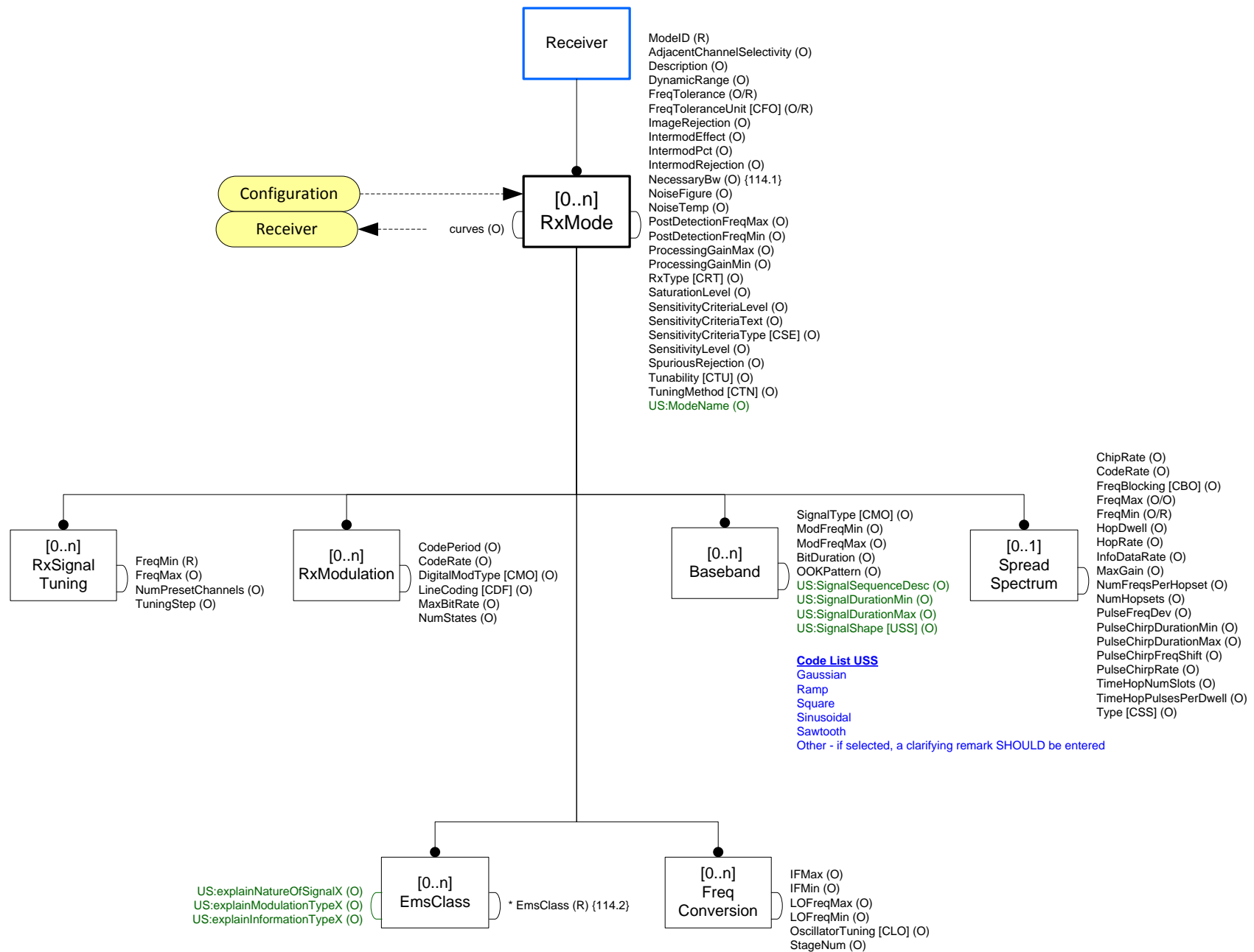


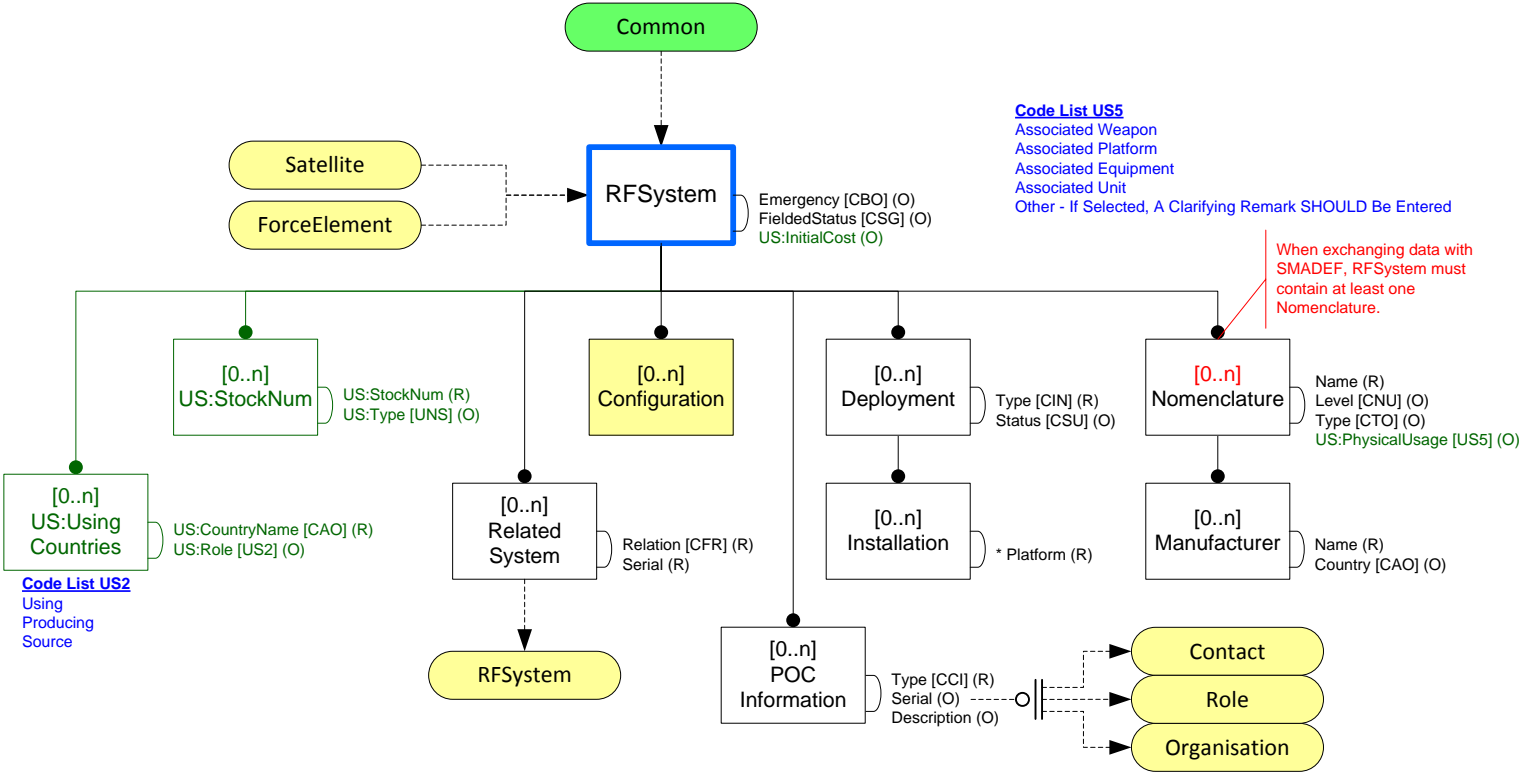


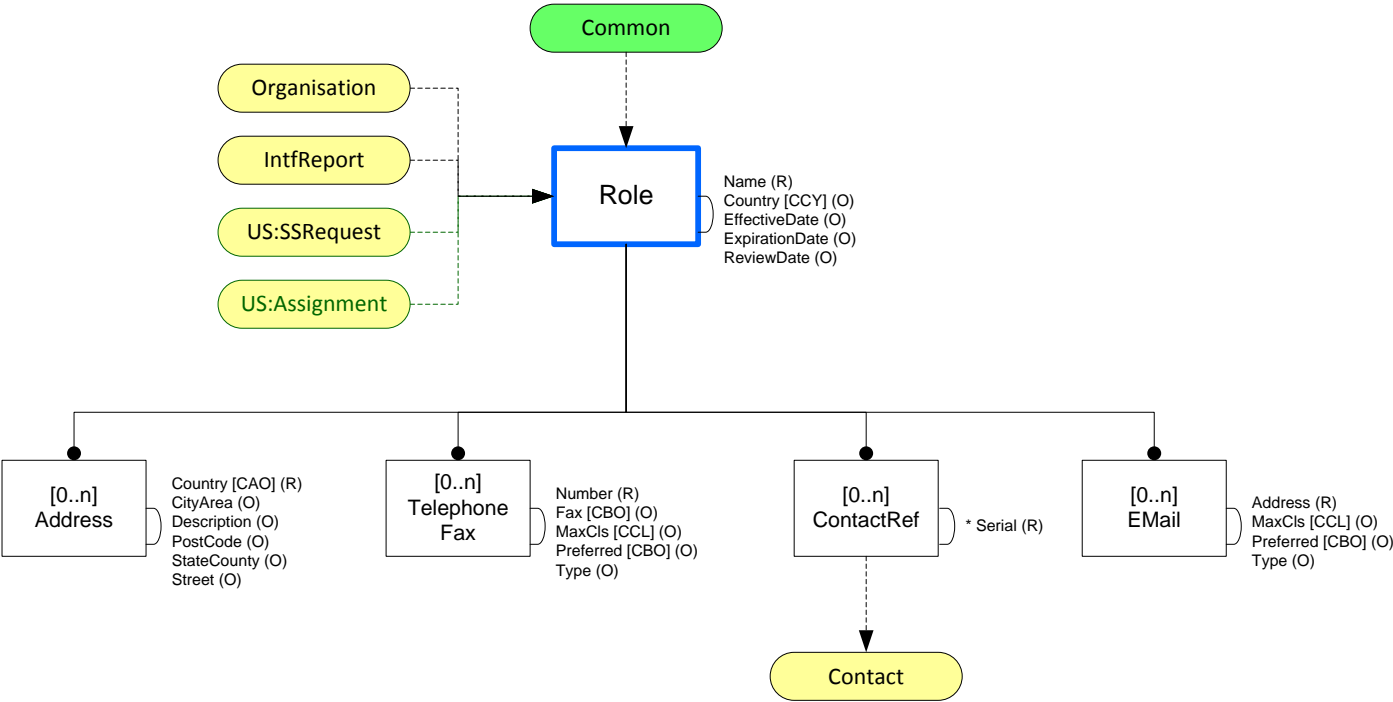
Administrative Errors Applicable to Message
(Code List CDR subset)
Data Invalid = An invalid dataset was received (other than Missing refs).
Data Not Supported = The referenced dataset is not supported by the system.
Data Rejected = The received dataset does not fulfill the requirement.
Missing Refs = The referenced dataset has been rejected because of missing cross-references.

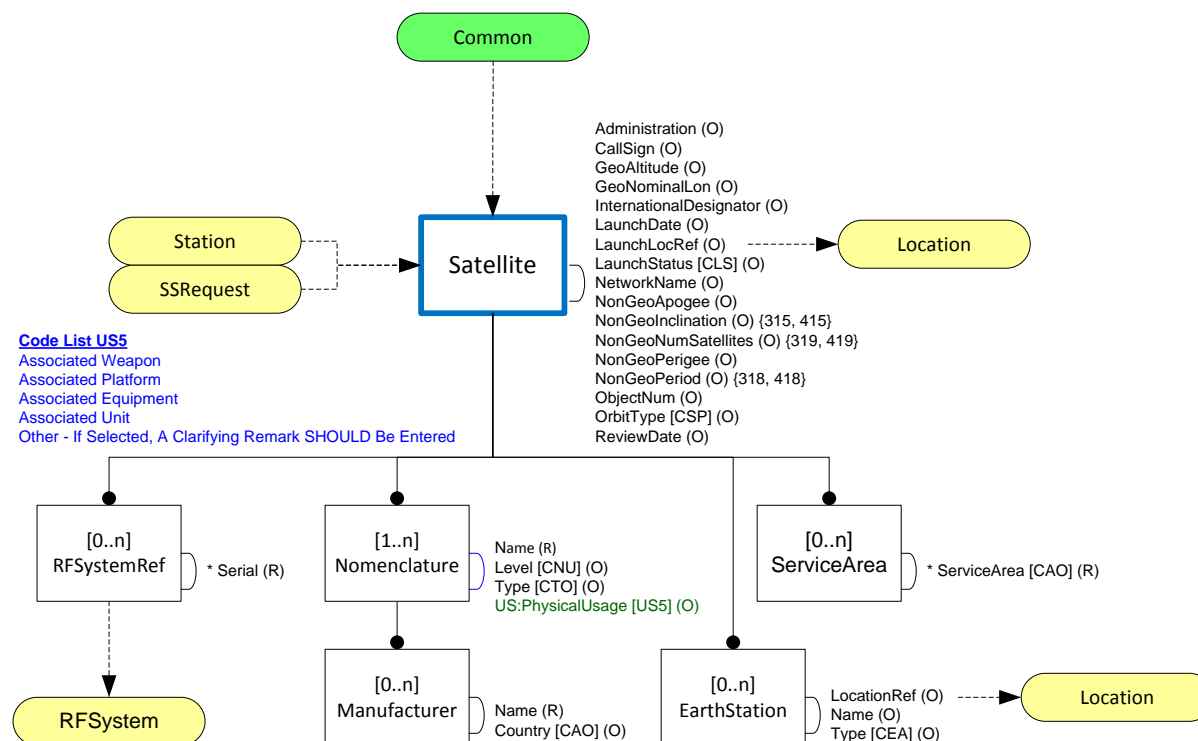


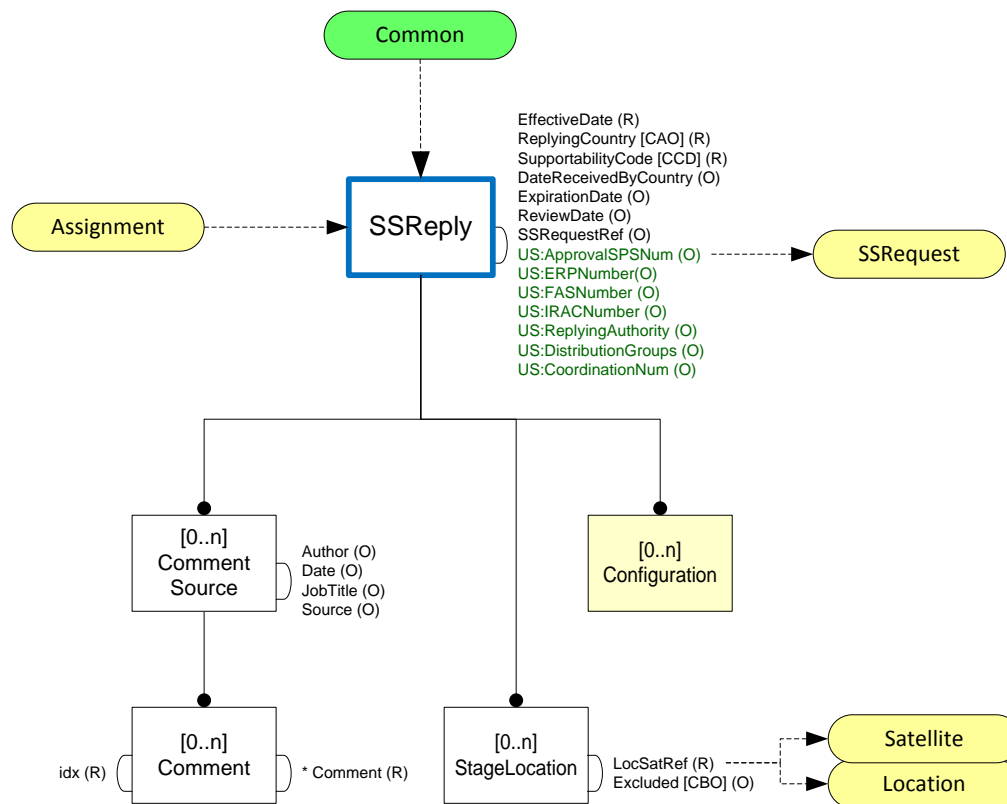


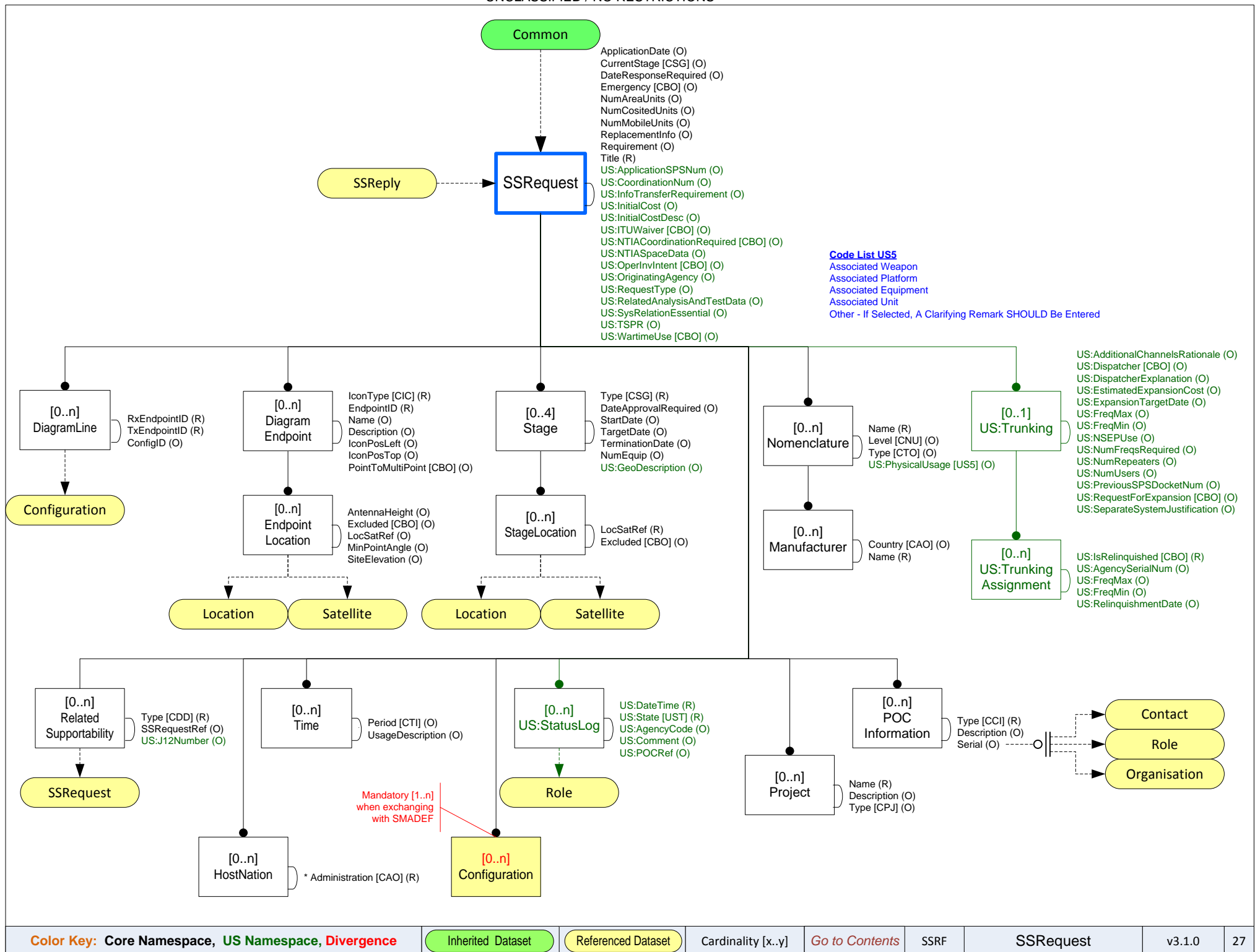


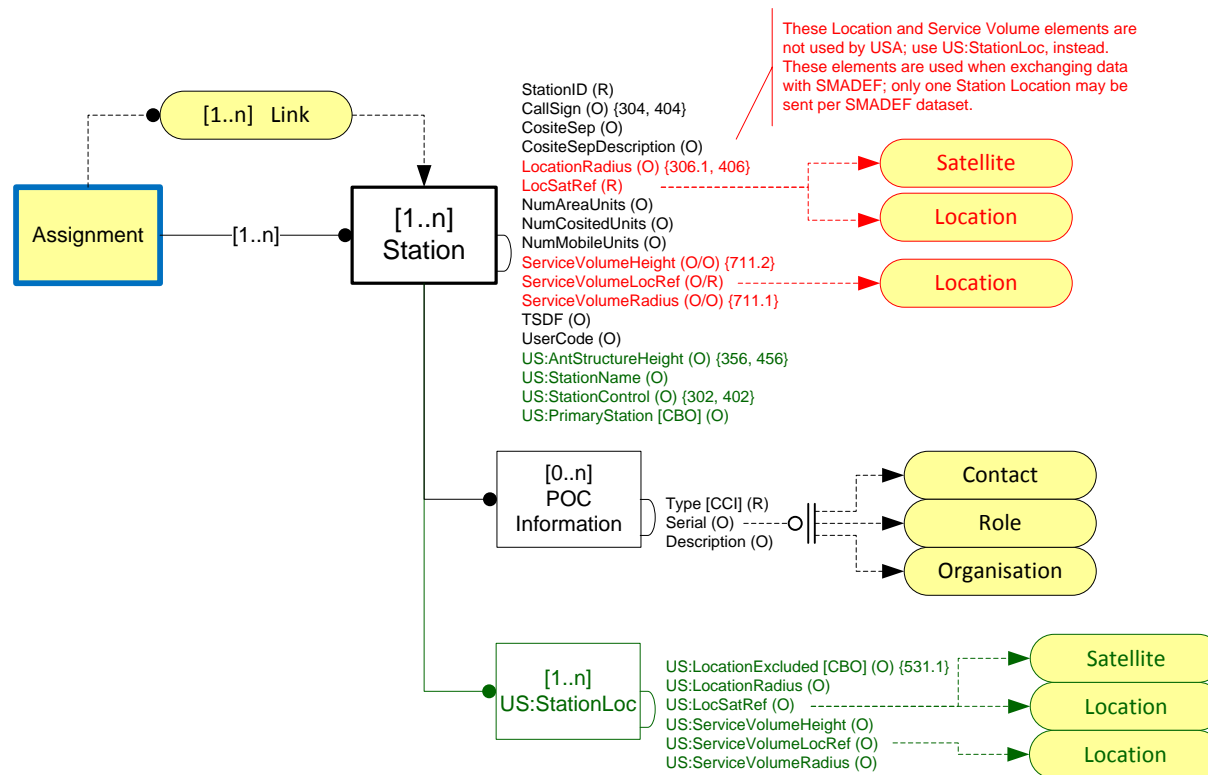


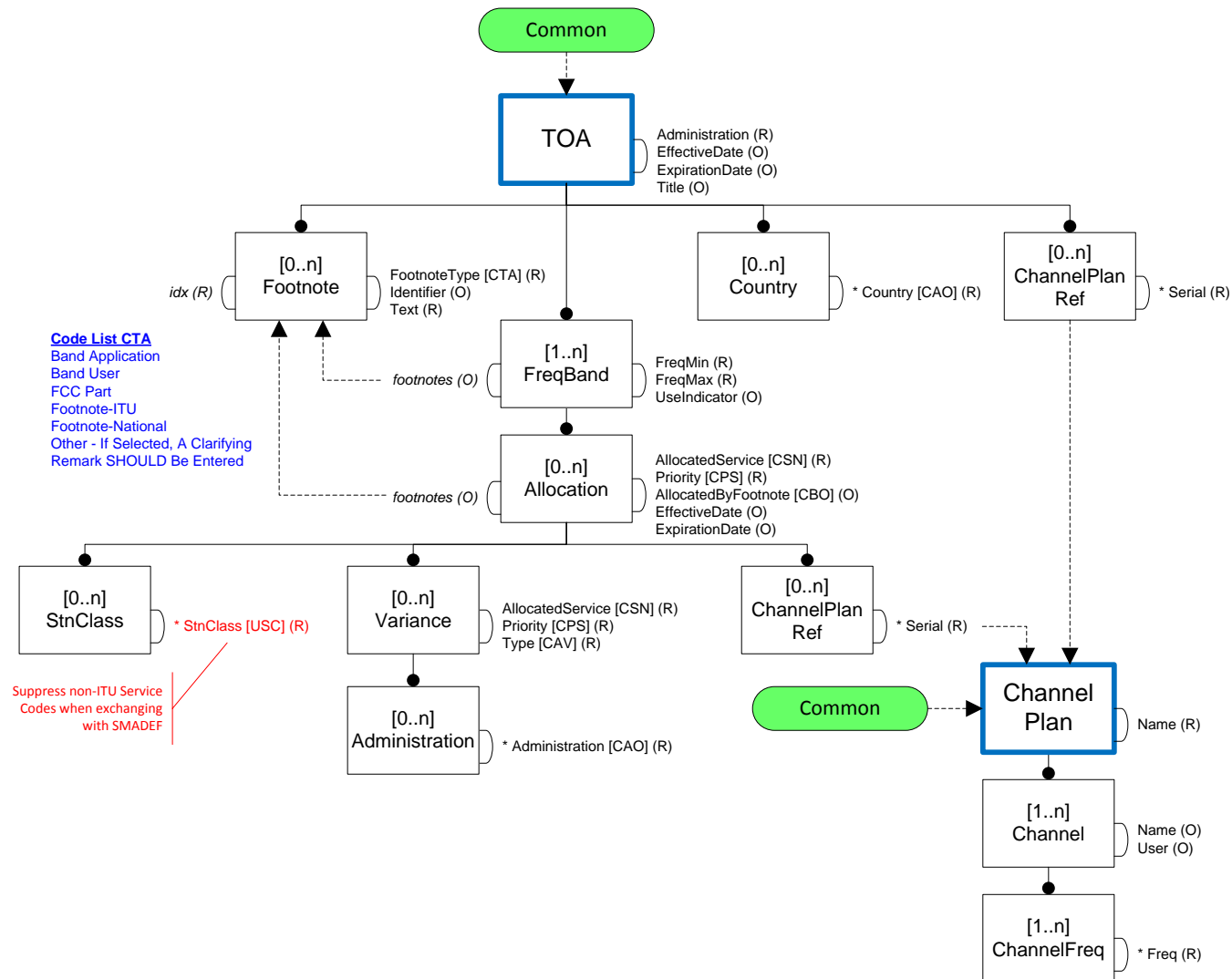


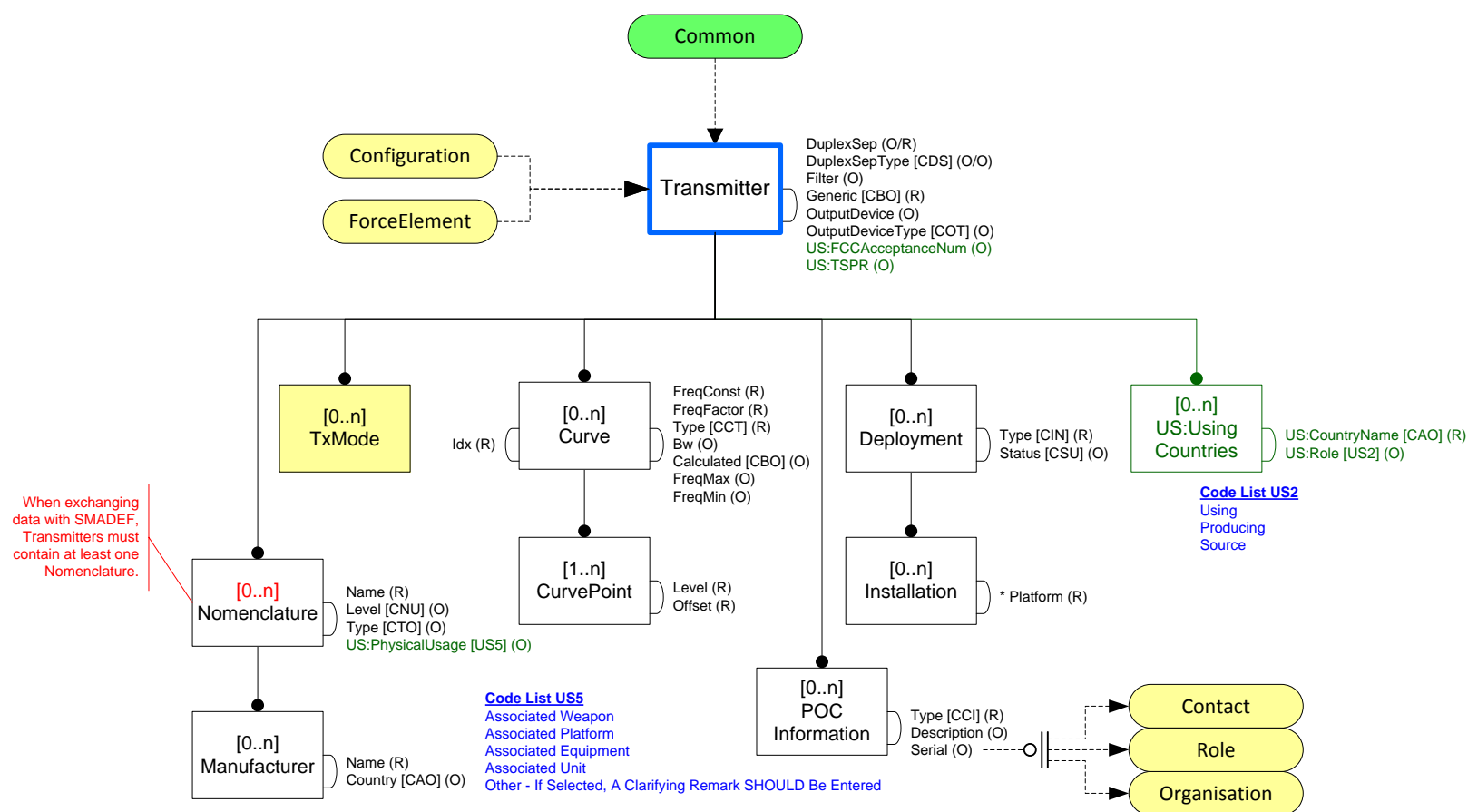


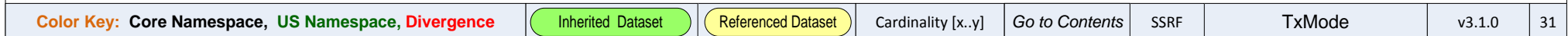












Applying the Standard Attributes

1. Element model attributes are applied to each Data Item (simple element). Standard attributes only apply to the element content, not to other attributes.
2. If attributes remain the same across multiple simple elements, business process rules will ensure consistency. For example, First Name and Last Name, points on the same curve, and the frequencies in a frequency range have the same classification and handling information.

Each Individual Data Item is capable of possessing the following Attributes:

"SUPP" {502}
"RMKS" {503}
"DESCR" {520}

Attribute Name	Type	Comment
cls [CCL] (R)	Single	Security classification of Data Items, overall dataset class of a Dataset
remarks (0)	List	RemarkIdx, from inherited Common Dataset, separated by whitespace
extReference (0)	List	extReferenceIdx from inherited Common Dataset containing all external references used in the Dataset, separated by whitespace
US:quality (0)	Single	Choices TBD: Outlier, Non-CodeList, etc.
US:recommendedValue	Single	A manually entered, automatically calculated, or statistically derived, most-probable correct value, for data with suspected poor quality
US:availability (0)	Single	Choices: UNKNOWN, N/A, and NAVAIL, to support legacy DD1494 data.
US:idref (0)	Single	Used to keep track of individual Data Items, when Datasets are sorted differently.

Each Dataset MUST have Overall Classification (cls, above), and MAY have:

releasability (0)	List	CCY code list for constructing "REL TO" strings - used for Datasets, only
US:legacyReleasability (0)	Char(250)	Handling instructions from legacy system (SCS, EL-CID, JETS); may contain non-standard or obsolete entries (e.g., OADR).

